



custom code creations

Initial Setup Instructions

You will need the camera, a USB power source, a USB cable, and a SIM card to follow this process to completion. If you do not have a standard USB cable to utilize, and you are not performing the work at the vehicle, you will need a DC converter to use the plug that comes in the box designed to work with the lighter adapter. The SIM Cards will be not be in the original camera box, and may be shipped outside of the container of cameras altogether.



1. Remove the camera from the box.
2. Make sure you have a SIM Card & a USB power cord and power source.

3. Install the SIM Card. Make sure you insert it with the card closest to the screen. It is possible at times to insert the card behind the slot.



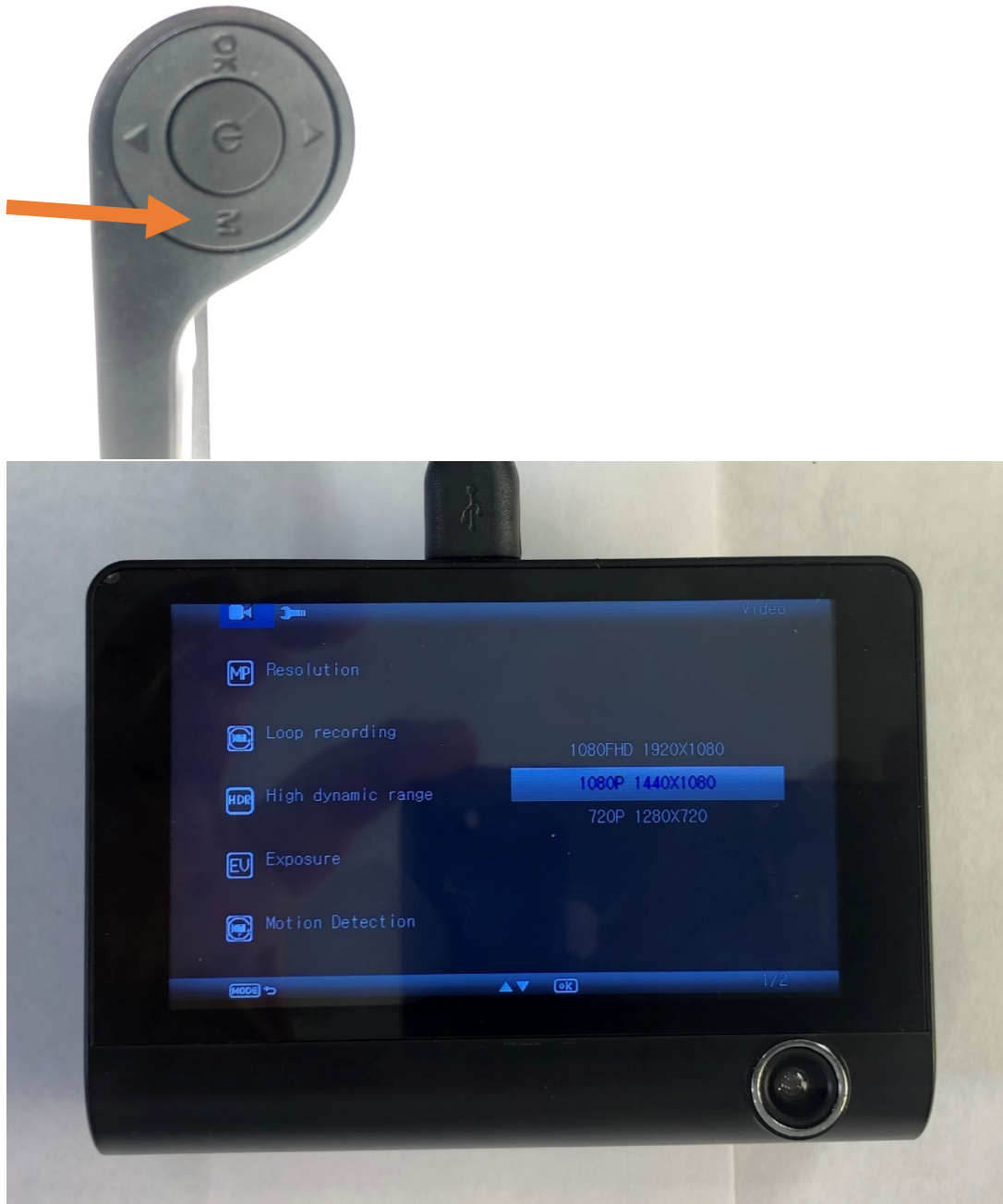
4. Plug in the USB cord and make sure it has power



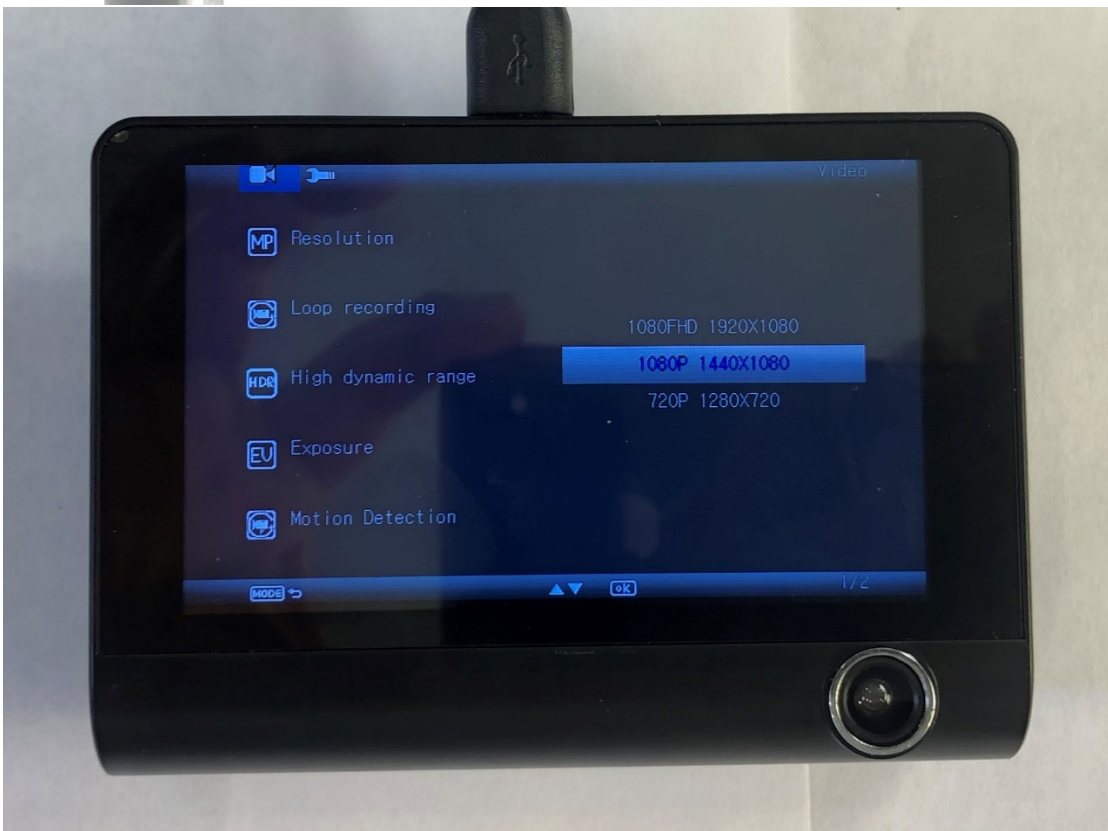
5. Turn the camera on by depressing the power button in the center on the side of the camera



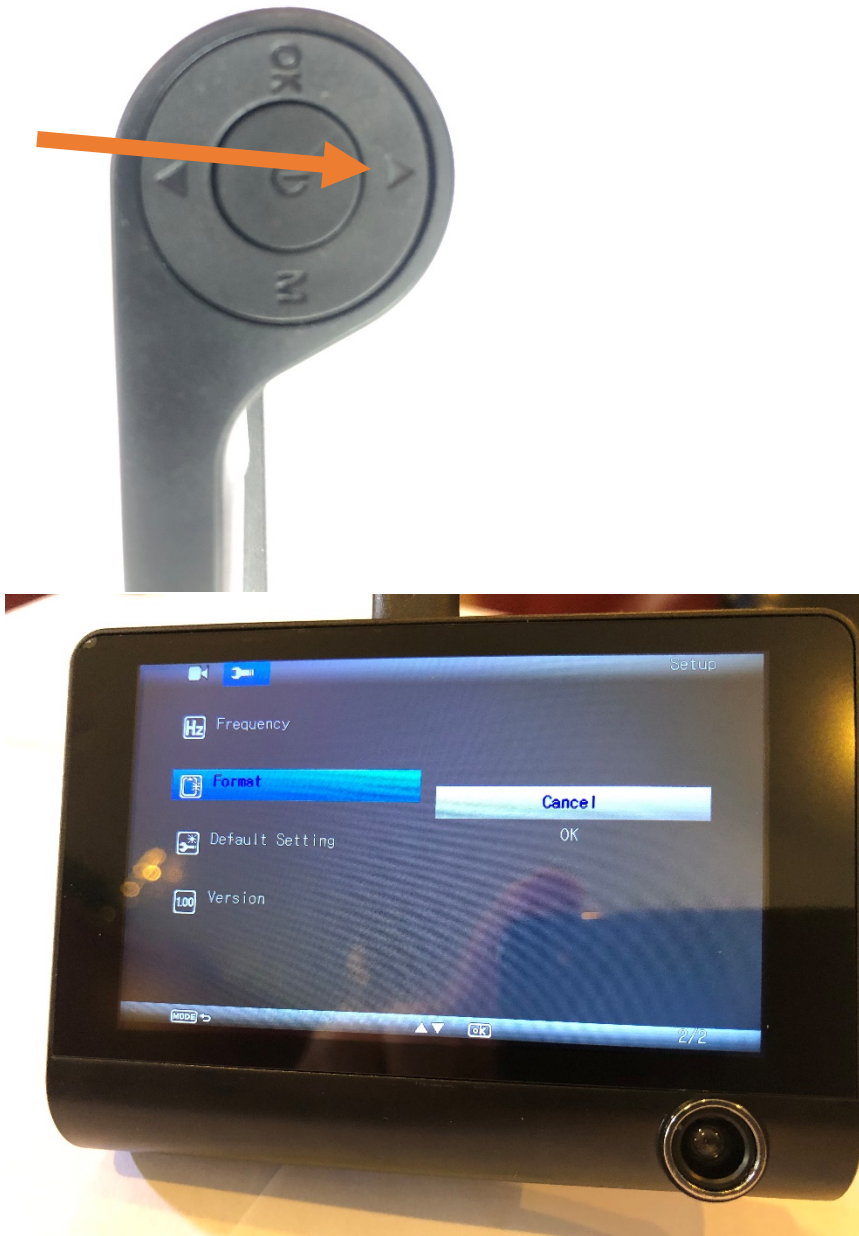
6. Press the "M" key once, and you will see the video menu (note, if the device automatically turned on and entered recording mode (flashing red light), Press the "OK" button to stop recording. Then press the "M" key and continue with these instructions.



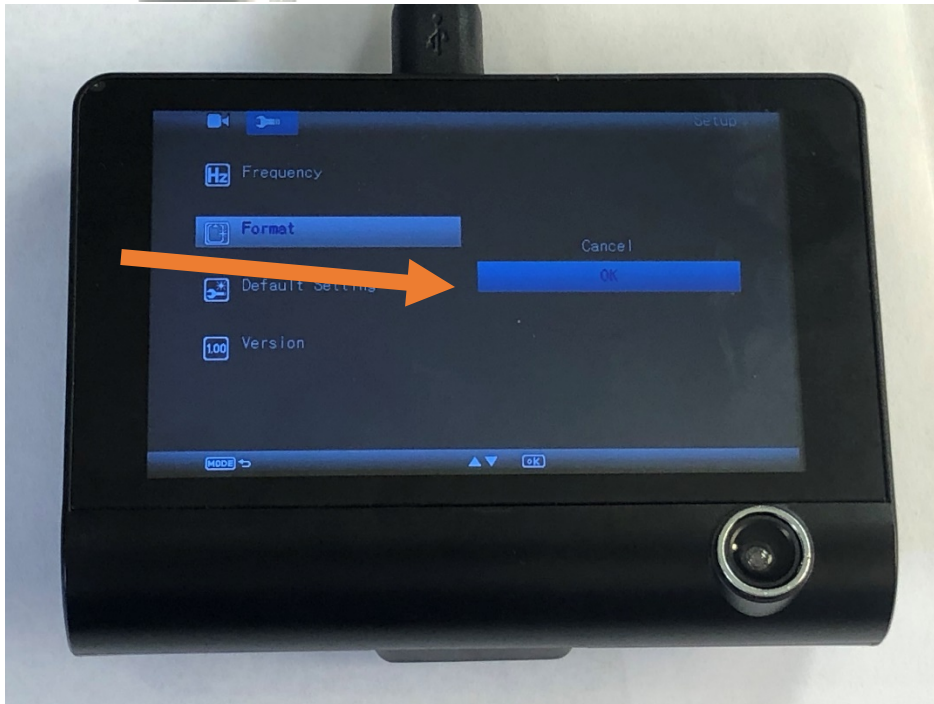
7. Press the M key a second time to see the tools menu



8. Four clicks up to move the menu selection to "Format"



9. Click "OK" to move to the format options, and arrow to "OK"



10. Click the "OK" button to perform the format



11. Click the M button to exit the format mode and menu



12. Click the “OK” button to turn the recording function on. When active, a red dot will flash on the



screen.

13. An additional press of the “OK” button will stop the recording but still display video.

Congratulations, the camera is now ready to be installed in a vehicle.

1. Add the suction cup connector to the back of the camera
2. Connect the suction cup to the windshield
3. Connect the USB cable and install lighter adapter for power
4. The customer can customize the settings to their liking from here.